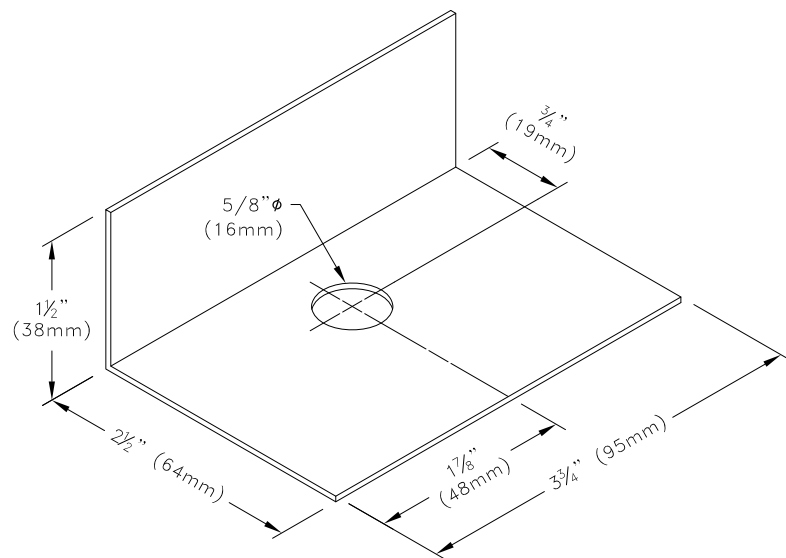


Allowable Loads – lbs (kN)^{A,B}

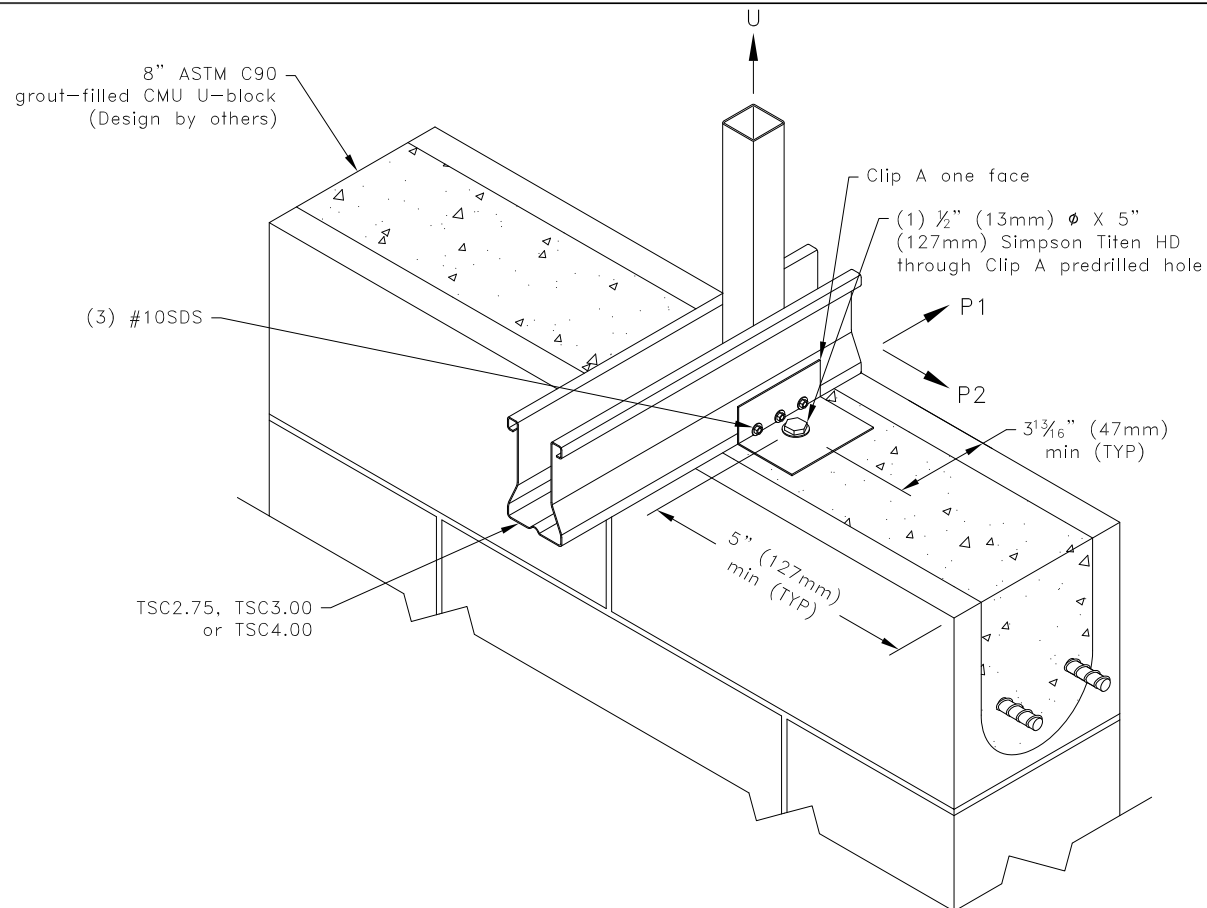
f'c of grout psi (MPa)	U	P1	P2
2000 (13.79)	300 (1.33)	160 (0.71)	300 (1.33)

A. Allowable loads shown on this detail are not in combination.
B. Clip on one face.



Clip A

16 ga ASTM A653 SS Grade 33 G60
Bare metal thickness, $t = 0.0538$ " (1.37mm)



General Notes:

1. SDS = Self-Drilling Tapping Screw
2. Screw end distance and edge distance is 9/32" minimum. Screw spacing is 9/16" minimum.
3. For 2000 psi grout: Special inspection is required. For proper installation of Titen HD fasteners, grout requirements, and requirements of special inspection, refer to ICC ESR-1056 (March 1, 2012).
4. It is the responsibility of the building designer to verify that the structural support members are designed for all applicable loads including (but not limited to) the loads given on this detail.
5. Cold-Formed Steel Calculations are per the 2010 supplement to the AISI 2007 "North American Specifications for the Design of Cold-Formed Steel Structural Members" (S100-07/S2-10).

TrusSteel®

www.TrusSteel.com

Florida: 2400 Lake Orange Drive, Suite 150 / Orlando, FL 32837 / (800) 755-6001
Missouri: 13389 Lakefront Drive / Earth City, MO 63045 / (800) 326-4102

Uplift Attachment To CMU Bearing

ITW Building Components Group, Inc. shall not be responsible for any performance failure in a connection due to a deviation from this detail. Any variation from this detail shall be approved in advance by ITW Building Components Group, Inc.

Custom Detail:

CD130802

Date:

08/06/13

Custom Detail Category:

Truss-To-Bearing: Concrete